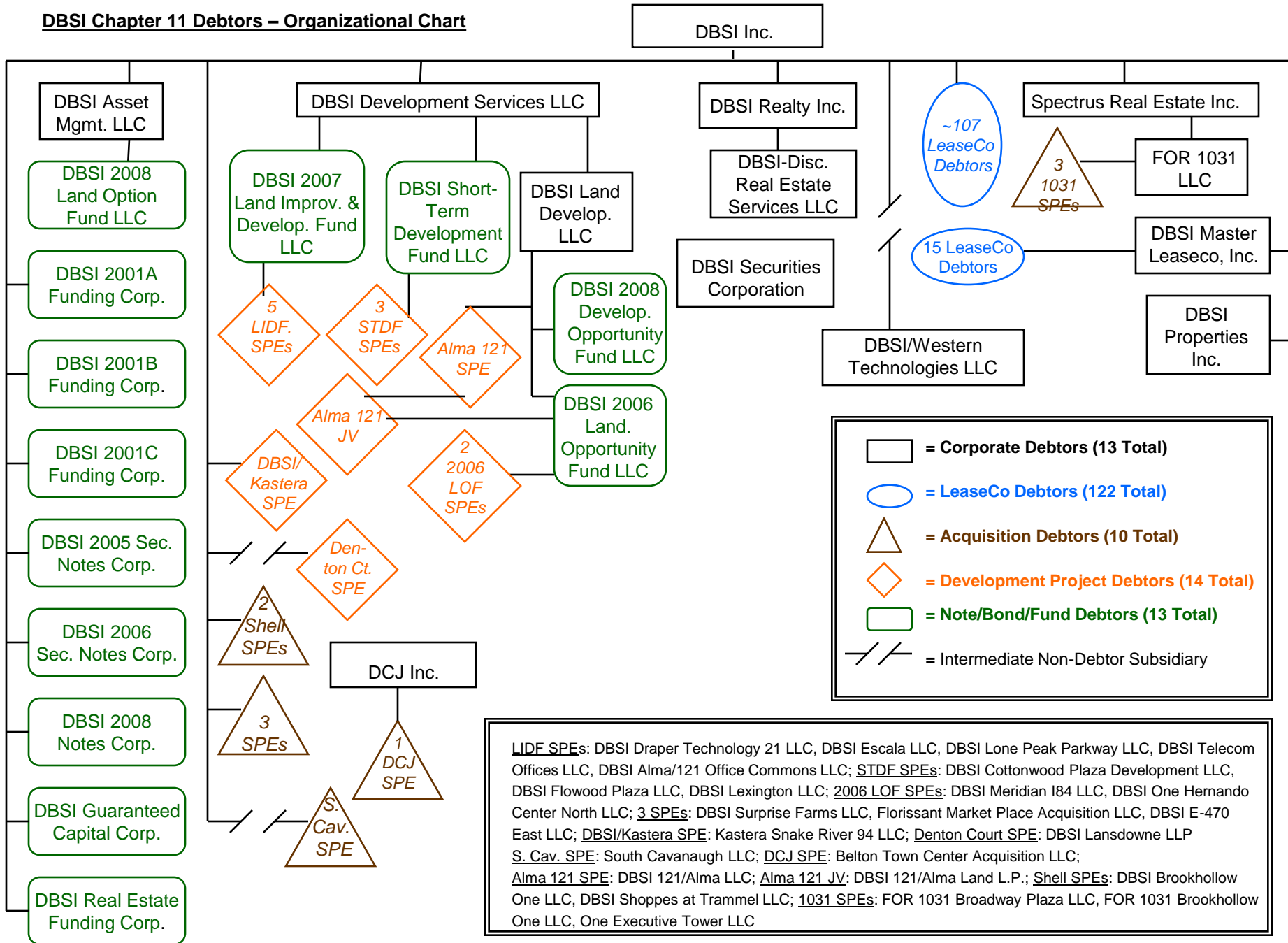


**DBSI Chapter 11 Debtors – Organizational Chart**

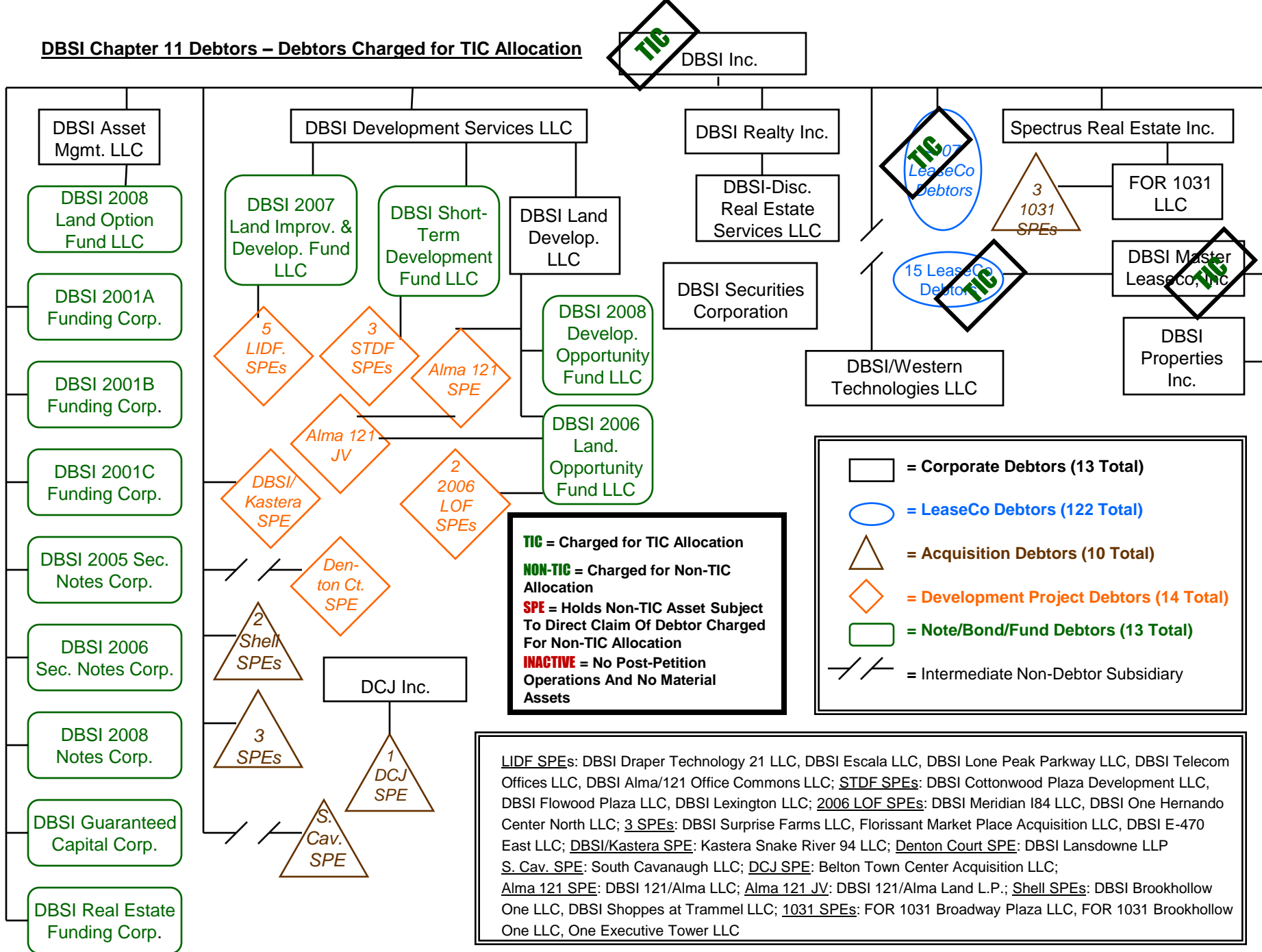


**Legend:**

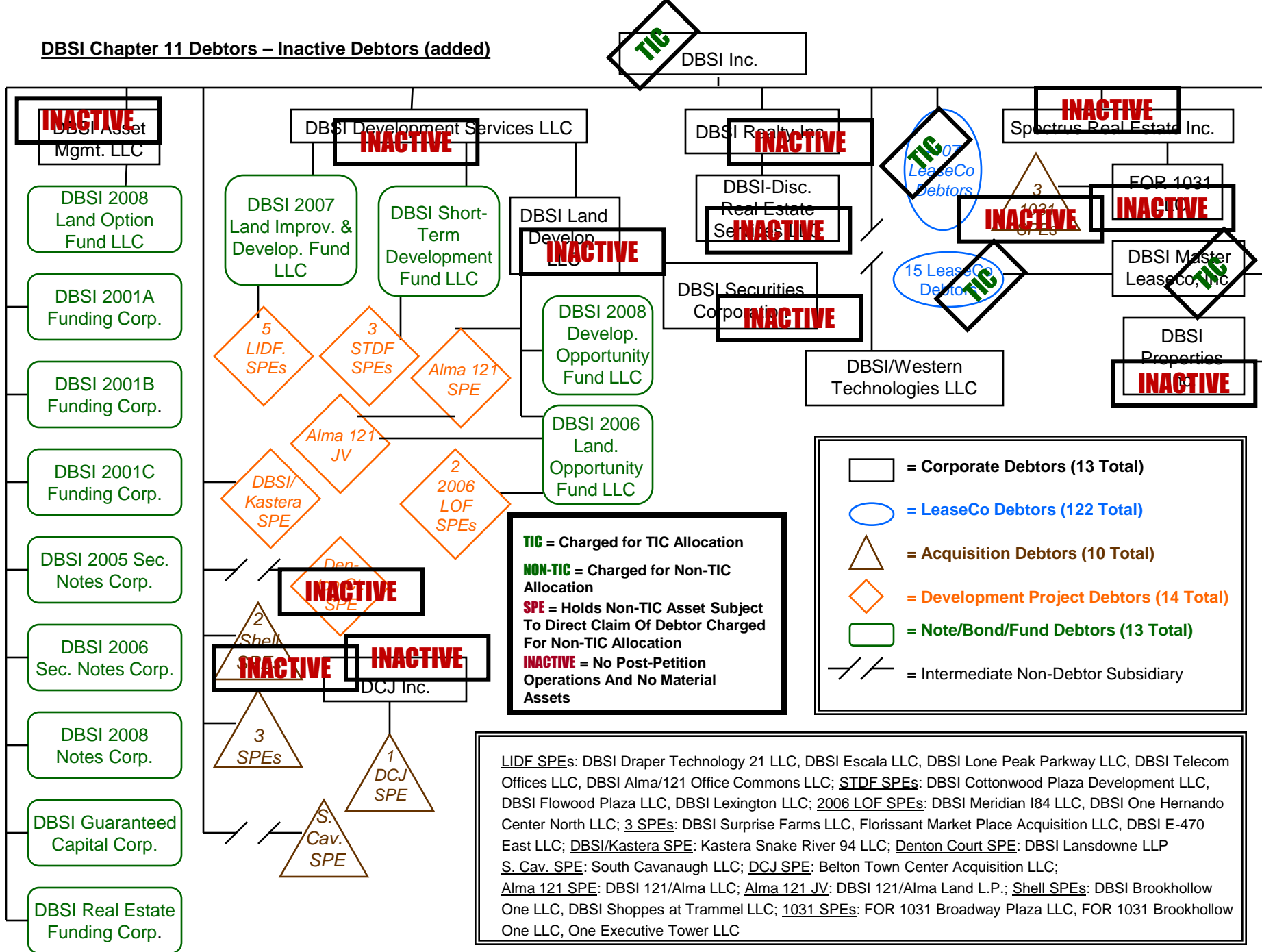
- = Corporate Debtors (13 Total)
- = LeaseCo Debtors (122 Total)
- = Acquisition Debtors (10 Total)
- = Development Project Debtors (14 Total)
- = Note/Bond/Fund Debtors (13 Total)
- = Intermediate Non-Debtor Subsidiary

**LIDF SPEs:** DBSI Draper Technology 21 LLC, DBSI Escala LLC, DBSI Lone Peak Parkway LLC, DBSI Telecom Offices LLC, DBSI Alma/121 Office Commons LLC; **STDF SPEs:** DBSI Cottonwood Plaza Development LLC, DBSI Flowood Plaza LLC, DBSI Lexington LLC; **2006 LOF SPEs:** DBSI Meridian I84 LLC, DBSI One Hernando Center North LLC; **3 SPEs:** DBSI Surprise Farms LLC, Florissant Market Place Acquisition LLC, DBSI E-470 East LLC; **DBSI/Kastera SPE:** Kastera Snake River 94 LLC; **Denton Court SPE:** DBSI Lansdowne LLP; **S. Cav. SPE:** South Cavanaugh LLC; **DCJ SPE:** Belton Town Center Acquisition LLC; **Alma 121 SPE:** DBSI 121/Alma LLC; **Alma 121 JV:** DBSI 121/Alma Land L.P.; **Shell SPEs:** DBSI Brookhollow One LLC, DBSI Shoppes at Trammel LLC; **1031 SPEs:** FOR 1031 Broadway Plaza LLC, FOR 1031 Brookhollow One LLC, One Executive Tower LLC

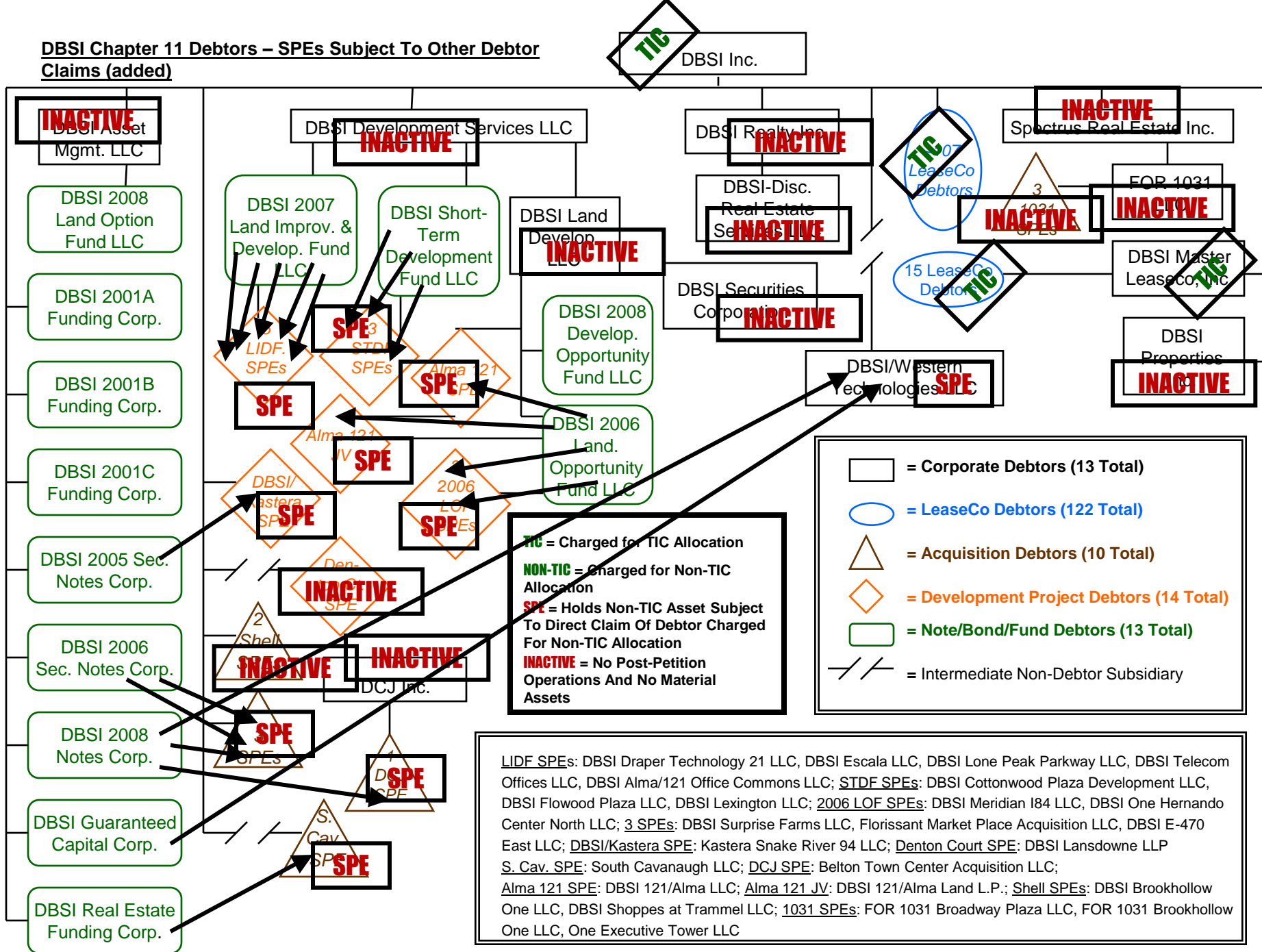
**DBSI Chapter 11 Debtors – Debtors Charged for TIC Allocation**



**DBSI Chapter 11 Debtors – Inactive Debtors (added)**



**DBSI Chapter 11 Debtors – SPEs Subject To Other Debtor Claims (added)**



**DBSI Chapter 11 Debtors – Debtors Charged for Non-TIC Allocation (added)**

